



A. Tick (✓) the correct word given in the bracket.

1. Lion is a (flesh/plant) eater.
2. (Frog/Tortoise) is an insect eater.
3. (Myna/Hawk) eats grain.
4. (Monkey/Fox) is a plant eater.

B. Fill in the blanks with the words given in the help box.

Lion Frog grains Elephant grass

1. Elephant is a plant eater.
2. Deer eats grass.
3. Myna eats grains.
4. Frog is an insect eater.
5. Lion is a flesh eater.

C. Write (T) for true and (F) for false statements.

1. All animals are plant eaters.
2. Monkey eats the flesh of other animals.
3. Peacock also eats insects.
4. Crocodile eats the flesh of other animals.

F
F
T
T

Circle them:

1. The animals that are flesh eaters

Chimpanzee Tiger Alligator Rabbit Hyena
Fox Giraffe Bear Deer Whale

2. The animals that are plant eaters

Lion Camel Hare Goat Wolf
Sheep Kangaroo Snake Bull Crocodile

Answer the following questions.

1. Who are flesh eater animals?
2. What do the dogs eat? *Bones*
3. Who are insect eater animals?
4. Write the name of an animal who loves sugarcane. *Elephant*

in Sharpening Questions

BSQs

Name two animals that are both plant eaters and flesh eaters. *Owl*

What do the fish eat? *Small fish, worms, small insects*

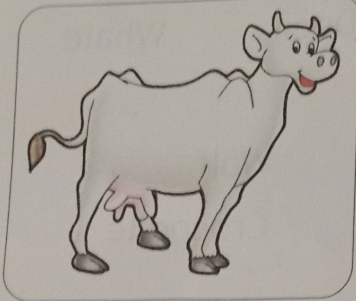
Life Skills

Save plants and animals

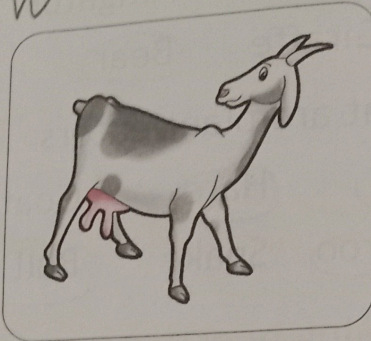
Both plants and animals are required to balance life on the earth. Both depend on each other. Tick (✓) the statements which you follow:

- a. Never hurt any living being.

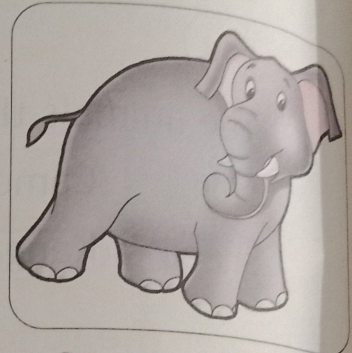
B. Look at the pictures of animals given below and write whether it is a plant eater/flesh eater/insect eater or grain eater. HW



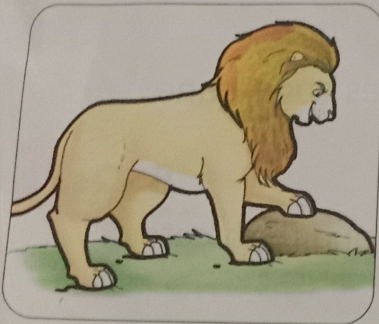
Plant eater



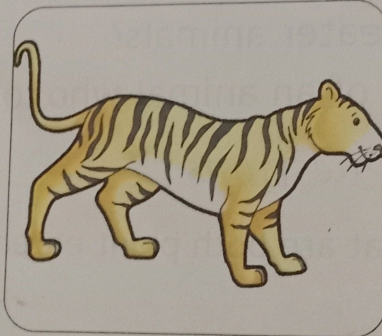
Plant eater



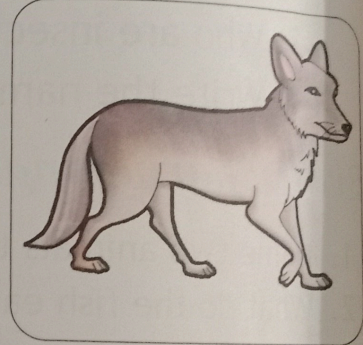
Plant eater



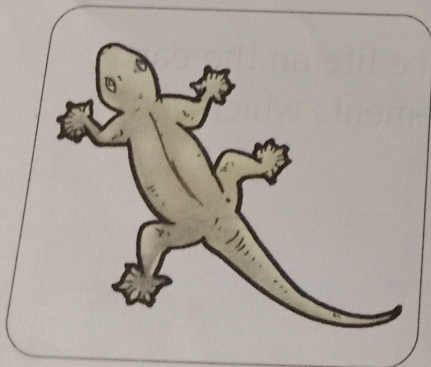
Flesh eater



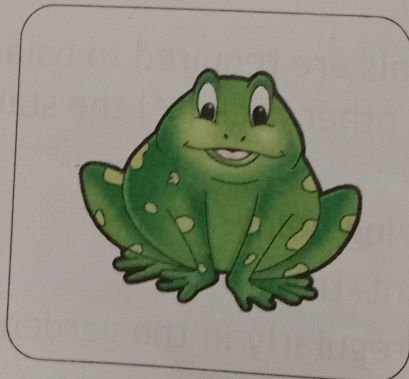
Flesh eater



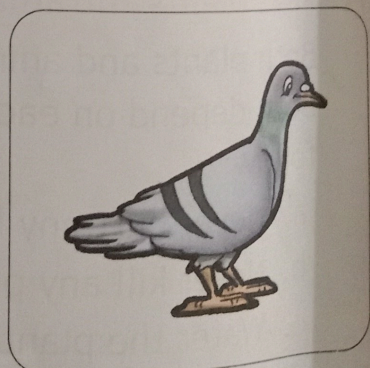
Flesh eater



Insect eater



Insect eater



Insect eater

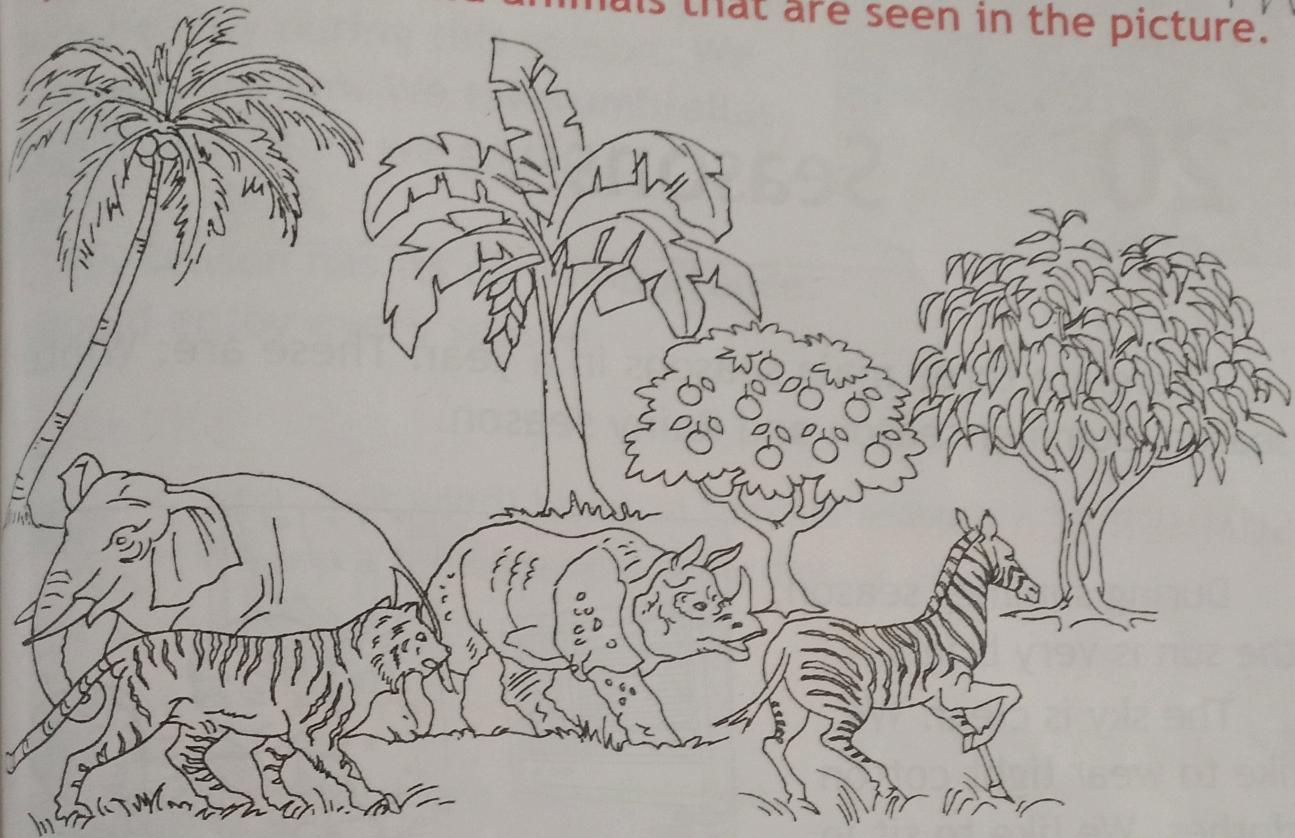
C. Color name



1.
2.

C. Colour the picture given below and write down the names of plants and animals that are seen in the picture.

HW



Coconut

Banana

Mango

Elephant

Zebra

Lion

FOR TEACHERS

1. Tell the students about the food habits of different animals.
2. Ask them about the food chain.