

11/12/25

65

DATE

PAGE

Ch-10

Time and Calendar

Ex - 10.2

QA Convert into hours.

1. 6 days

1 day - 24 hrs

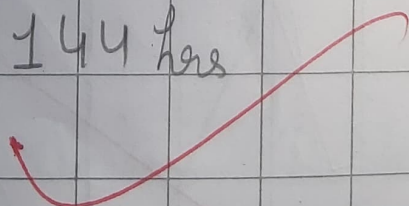
6 day -  $6 \times 24$  hrs

② = 144 hrs

2 4

X 6

1 4 4



2. 2 days 11 hrs

$$1 \text{ day} = 24 \text{ hrs}$$

$$2 \text{ days} = 2 \times 24 \\ = 48 \text{ hrs}$$

$$\begin{array}{r} 24 \\ \times 2 \\ \hline 48 \end{array}$$

$$2 \text{ days } 11 \text{ hrs} = 48 \text{ hrs} + 11 \text{ hrs}$$

$$= 59 \text{ hrs}$$

$$\begin{array}{r} 48 \\ + 11 \\ \hline 59 \end{array}$$

Q3 One week

$$1 \text{ week} = 7 \text{ days}$$

$$1 \text{ days} = 24 \text{ hrs}$$

$$7 \text{ days} = 7 \times 24 \text{ hrs} \\ = 168 \text{ hrs}$$

②

2 4

x 7

---

1 6 8

---

Q3 Convert into minutes -

Q1 16 hours 55 minutes

1 hour = 60 min

16 hrs =  $16 \times 60$  min

= 960 min

②

16

$\times 60$

---

96

16 hrs 55 min = 960 min

---

= 1015 min

①

960

+ 55

---

1015

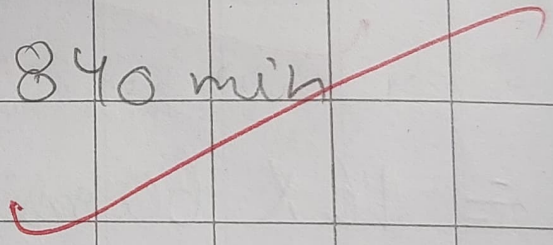


2. 14 hours

1 hours - 60 min

$$14 \text{ hrs} = 14 \times 60 \text{ min}$$

$$= 840 \text{ min}$$



②

14

$\times 60$

---

840

Q1 Convert into seconds

1. 40 minutes

$$1 \text{ min} = 60 \text{ sec}$$

$$40 \text{ min} = 40 \times 60 \text{ sec}$$

$$= 2400 \text{ sec}$$

Q2 13 min 12 sec

$$1 \text{ min} = 60 \text{ sec}$$

$$13 \text{ min} = 13 \times 60 \text{ sec}$$

25

DATE \_\_\_\_\_  
PAGE \_\_\_\_\_

$$= 780 \text{ sec}$$

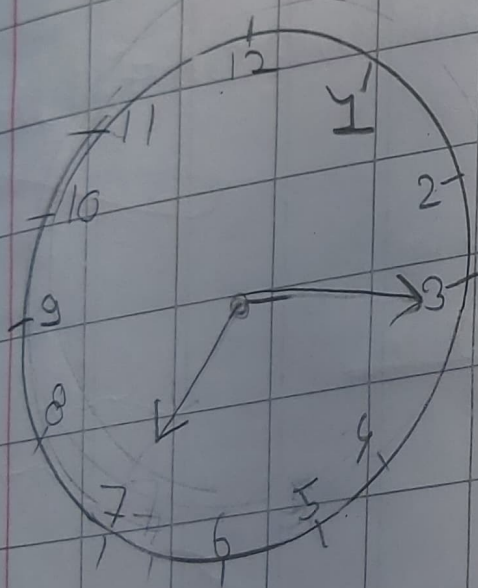
$$13 \text{ min } 12 \text{ sec} - 780 \text{ sec}$$

$$\begin{array}{r} 12 \text{ sec} \\ + 1 \text{ min} \\ \hline 792 \text{ sec} \end{array}$$

Ch 10

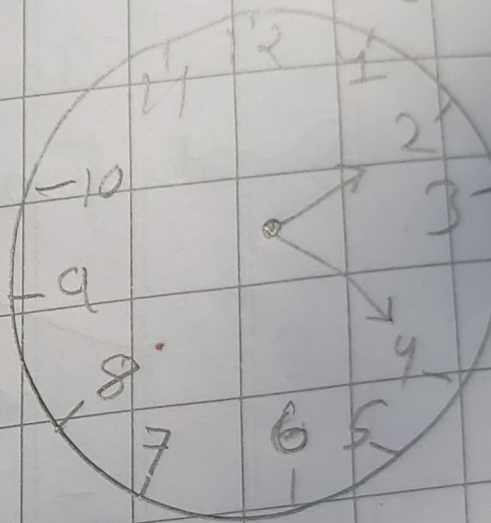
Chapter Test

Q.E Write the time in two ways



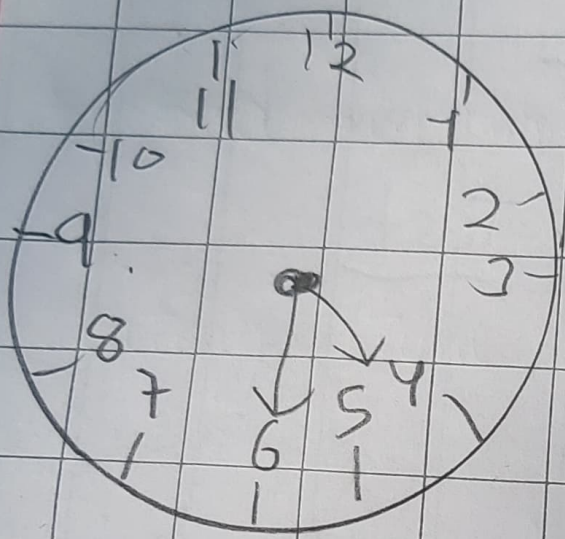
7:15

Quarter past 7



2:20

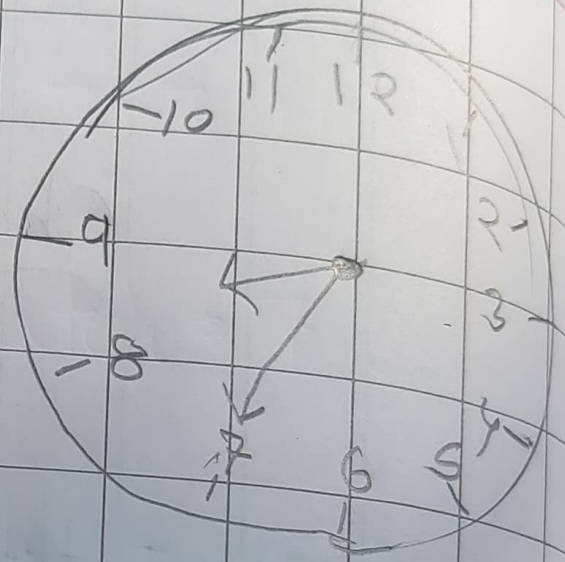
20 min past



4:30

Half past 4

---



8:35

35 min past 8

---