

Class:- 1 st, G.K.

Copywork, Pg- 2

My wonderful body

Q- Name of the body parts:-

Ans- i) Neck

ii) Arm

iii) Knee

iv) Head

v) Foot

Q2- Name of the sense organs-

Ans- i) Eyes

ii) Nose

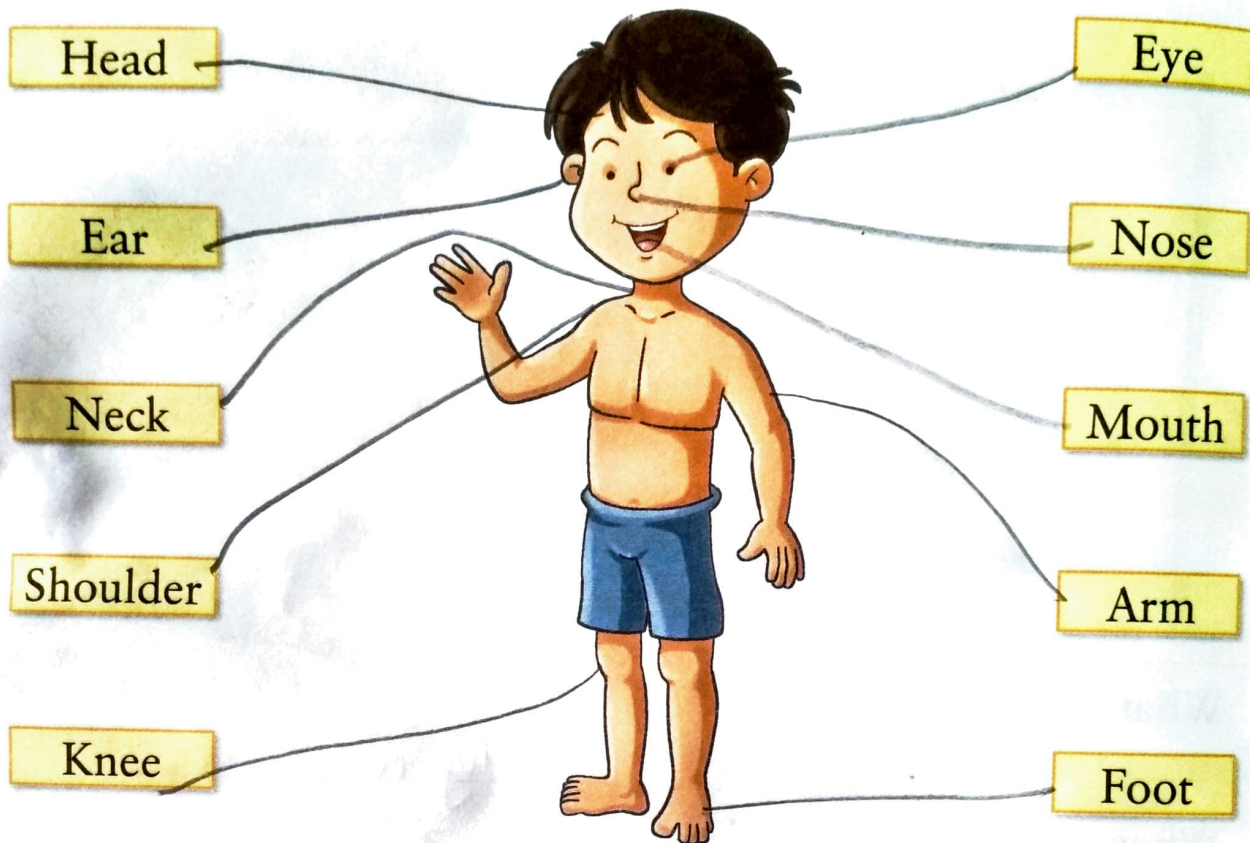
iii) Ears

iv) Tongue

v) Skin



A. Draw lines and match the body parts to their names.

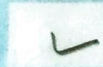
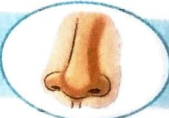


B. Tick (✓) the correct sense organs.

1. I see with my



2. I hear with my



3. I taste with my



4. I smell with my



5. I feel with my

